

**Anti-SOCS1 Antibody**  
**Catalog # ABO10557****Specification**

---

**Anti-SOCS1 Antibody - Product Information**

Application	WB, IHC-P
Primary Accession	<a href="#">O15524</a>
Host	Rabbit
Reactivity	Human, Mouse, Rat
Clonality	Polyclonal
Format	Lyophilized

**Description**

Rabbit IgG polyclonal antibody for Suppressor of cytokine signaling 1(SOCS1) detection. Tested with WB, IHC-P in Human;Mouse;Rat.

**Reconstitution**

Add 0.2ml of distilled water will yield a concentration of 500ug/ml.

**Anti-SOCS1 Antibody - Additional Information**

**Gene ID** 8651

**Other Names**

Suppressor of cytokine signaling 1, SOCS-1, JAK-binding protein, JAB, STAT-induced STAT inhibitor 1, SSI-1, Tec-interacting protein 3, TIP-3, SOCS1, SSI1, TIP3

**Calculated MW**

23551 MW KDa

**Application Details**

Immunohistochemistry(Paraffin-embedded Section), 0.5-1 µg/ml, Human, Mouse, Rat, By Heat<br>Western blot, 0.1-0.5 µg/ml, Human, Rat, Mouse<br>

**Subcellular Localization**

Nucleus . Cytoplasmic vesicle . Detected in perinuclear cytoplasmic vesicles upon interaction with FGFR3.

**Tissue Specificity**

Expressed in all tissues with high expression in spleen, small intestine and peripheral blood leukocytes.

**Protein Name**

Suppressor of cytokine signaling 1(SOCS-1)

**Contents**

Each vial contains 5mg BSA, 0.9mg NaCl, 0.2mg Na<sub>2</sub>HPO<sub>4</sub>, 0.05mg Thimerosal, 0.05mg NaN<sub>3</sub>.

**Immunogen**

A synthetic peptide corresponding to a sequence at the C-terminus of human SOCS1(197-211aa

NPVLRDYLSFPFQI), identical to the related mouse and rat sequences.

**Purification**

Immunogen affinity purified.

**Cross Reactivity**

No cross reactivity with other proteins

**Storage**

**At -20°C for one year. After reconstitution, at 4°C for one month. It can also be aliquotted and stored frozen at -20°C for a longer time. Avoid repeated freezing and thawing.**

**Sequence Similarities**

Contains 1 SH2 domain.

**Anti-SOCS1 Antibody - Protein Information****Name** SOCS1

**Synonyms** SSI1, TIP3 {ECO:0000303|PubMed:9341160}

**Function**

Essential negative regulator of type I and type II interferon (IFN) signaling, as well as that of other cytokines, including IL2, IL4, IL6 and leukemia inhibitory factor (LIF) (PubMed: <a href="http://www.uniprot.org/citations/32499645" target="\_blank">32499645</a>, PubMed: <a href="http://www.uniprot.org/citations/33087723" target="\_blank">33087723</a>). Downregulates cytokine signaling by inhibiting the JAK/STAT signaling pathway. Acts by binding to JAK proteins and to IFNGR1 and inhibiting their kinase activity. In vitro, suppresses Tec protein-tyrosine activity (PubMed: <a href="http://www.uniprot.org/citations/9341160" target="\_blank">9341160</a>). Regulates IFN-gamma (IFNG)- mediated sensory neuron survival (By similarity). Probable substrate recognition component of an ECS (Elongin BC-CUL2/5-SOCS-box protein) E3 ubiquitin ligase complex which mediates the ubiquitination and subsequent proteasomal degradation of target proteins (PubMed: <a href="http://www.uniprot.org/citations/11278610" target="\_blank">11278610</a>, PubMed: <a href="http://www.uniprot.org/citations/11313480" target="\_blank">11313480</a>).

**Cellular Location**

Nucleus. Cytoplasmic vesicle. Note=Detected in perinuclear cytoplasmic vesicles upon interaction with FGFR3

**Tissue Location**

Expressed in all tissues with high expression in spleen, small intestine and peripheral blood leukocytes

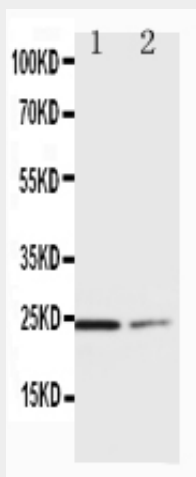
**Anti-SOCS1 Antibody - Protocols**

Provided below are standard protocols that you may find useful for product applications.

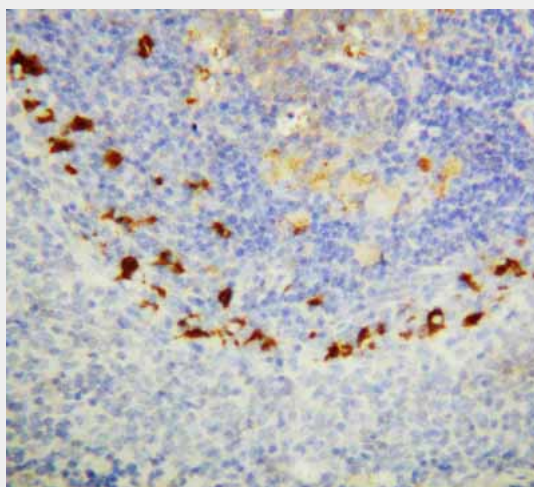
- [Western Blot](#)
- [Blocking Peptides](#)
- [Dot Blot](#)
- [Immunohistochemistry](#)

- [Immunofluorescence](#)
- [Immunoprecipitation](#)
- [Flow Cytometry](#)
- [Cell Culture](#)

### Anti-SOCS1 Antibody - Images



Anti-SOCS1 antibody, ABO10557, Western blotting Lane 1: HT1080 Cell Lysate Lane 2: COLO320 Cell Lysate



Anti-SOCS1 antibody, ABO10557, IHC(P) IHC(P): Rat Spleen Tissue

### Anti-SOCS1 Antibody - Background

Suppressor of cytokine signaling 1 (SOCS1), also known as Jak-binding protein (JAB), is a negative regulator to a subset of protein-tyrosine kinases. This 211-amino acid protein has a molecular mass of about 23.5 kD. The TEC-binding region of SOCS1 resides in the N terminus. SOCS1 associates with Tec and suppresses its kinase activity. The SOCS1 gene is intronless and is mapped to on chromosome 16p13.13. SOCS1 regulates the JAK/STAT signal-transduction pathway. Moreover, it contributes to protection against hepatic injury and fibrosis, and may also protect against hepatocarcinogenesis.